

Bracket quantity

This table applies only to KWIKtrak rails 180mm, 140mm, 90mm and embedded 90mm, mounted on brackets, mobile tracks of X-Y systems and rails supported using wall posts or wall brackets, notwithstanding the configuration of the support system.

All rails supported with regular brackets (#700.11100), joint brackets (#700.11105) and 454 kg (1000 lb) brackets (#700.11204), whatever their length, should be supported by a minimum of three fixation points, distributed as evenly as possible over the length of the rail, and according to the following span chart.

Span chart

SWL (Safe Working Load)	120 kg 265 lb	200 kg 440 lb	272 kg 600 lb	454 kg 1000 lb			
Motors compatibility (related SWL can support these motor's maximum capacities)							
Installation method	600 lb	600 lb	600 lb	1000 lb	600 lb	1000 lb	
Span (maximum distance between two consecutive brackets, two walls or two fixed rails)	Wall to wall Straight X-Y system	Wall to wall Straight X-Y system	Wall to wall Straight X-Y system	Straight X-Y system	Straight (load is distributed on two fixed tracks)	X-Y system (one fixed track can be loaded with the full SWL)	X-Y system (load is distributed on two mobile tracks)
H90	3400 133	2600 102	2100 82	1400 55	2100 82	1400 55	2100 82
H140	6400 251	5100 200	4300 169	3100 122	4300 169	3100 122	4300 169
H180	7800 307	7300 287	6200 244	4700 185	6200 244	4700 185	6200 244

001-01014-EN rev 2

The only exception to this rule applies to a rail which has a length that is less than 1000mm (39") and is connected to either a straight rail (fig.1), a curved rail (fig.2), an exchanger (fig.3) or a turntable (fig.4).

fig.1

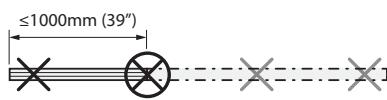


fig.2

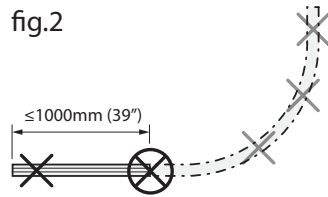


fig.3

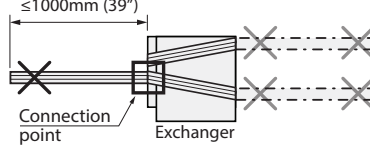
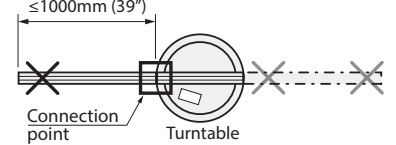


fig.4



Overhang

The maximum allowable overhang between the last bracket and the end of the rail is 300mm (12") for all types of rail (fig.5)

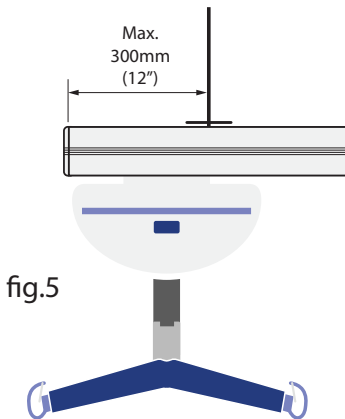


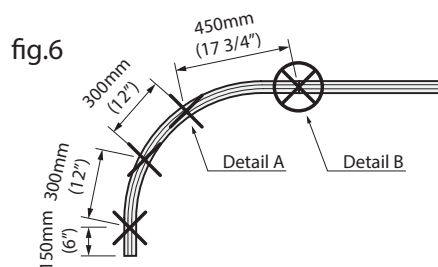
fig.5

Bracket quantity on curved tracks

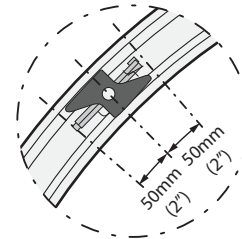
The number of required brackets for all curved tracks is equal to 4, except for curved tracks #700-12841 and 700-12861, which requires five brackets. Installation details described in the installation guide. Brackets must be positioned as shown in fig.6

- In all cases, there must be two regular brackets (#700.11100) uniformly located in the center of the curve (fig.6). A positioning range of ±50mm (2") is acceptable for these two brackets (detail A).
- If the end of the curve is connected to another rail, there must be a joint bracket (#700.11105) at the center of the joint (detail B).
- If the end of the curve is not connected to another rail, a regular bracket (#700.11100) must be used at a distance not exceeding 150mm (6") from this end.

fig.6



Detail A
(top view)



Detail B
(side view)

