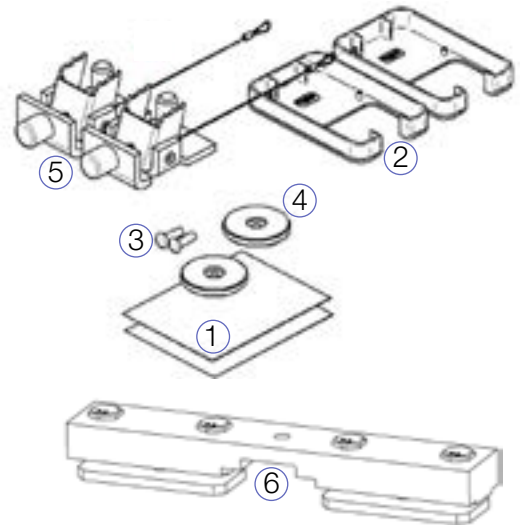


### Installation Instructions for the KWIKtrak Curtain Gap

#### Parts List

#	Part Number	Description	Qty
1	001-10666	End rail sticker	2
2	200-11244	Curtain Jump protector	2
3	000.00897	3/16" Pop rivet	2
4	200-10685	End stopper (jump configuration)	2
5	700.11005	Autolock end stopper	2
6	700-16950	Track bracket curtain gap for 272 kg	1



#### Special tools required

- Ø4.9mm Drill bit
- Manual pop-riveter
- 19mm Wrench

#### Installation Requirements for Curtain Gap Option Configurations

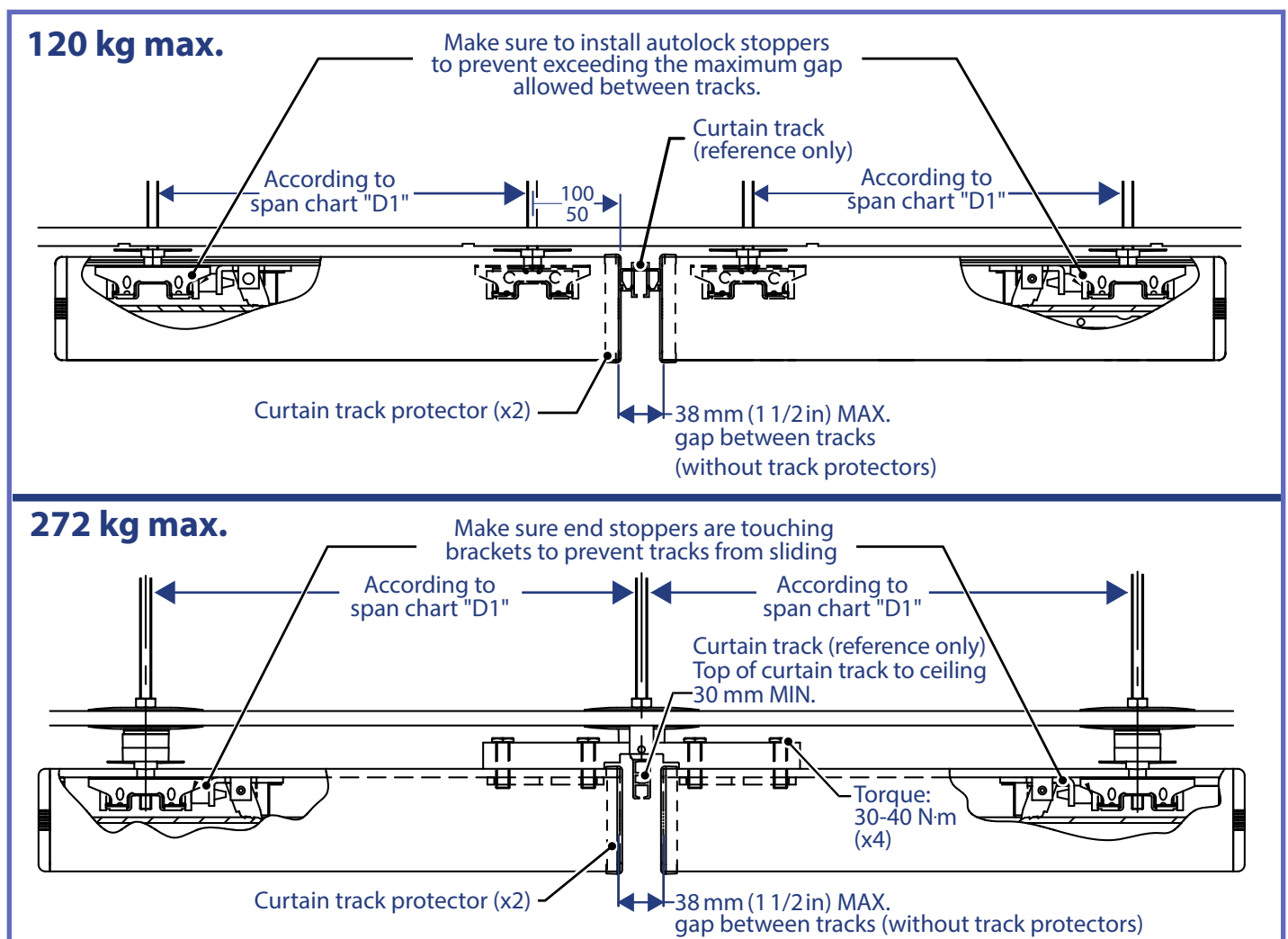


Fig. 1

## Procedure

After installing the appropriate configuration (see Fig. 1):

- 1) Drill a  $\varnothing 4.9$  mm hole at a distance of 25-30 mm from the end of the curtain gap rail.
- 2) Mount an end stopper (#200-10685) on the rail using a pop-riveter as shown in Fig. 2.
- 3) Repeat step 1 and 2 for the second rail end.
- 4) Clean any drilling debris from the rails.
- 5) Install both curtain jump protectors.
- 6) Perform a functional test using either a portable trolley kit (#700-10660) or a Maxi Sky 2 equipped with a curtain jump kit (#700-15740).

**WARNING:** Never install a trolley not equipped with a curtain kit onto a track system featuring a curtain gap configuration.

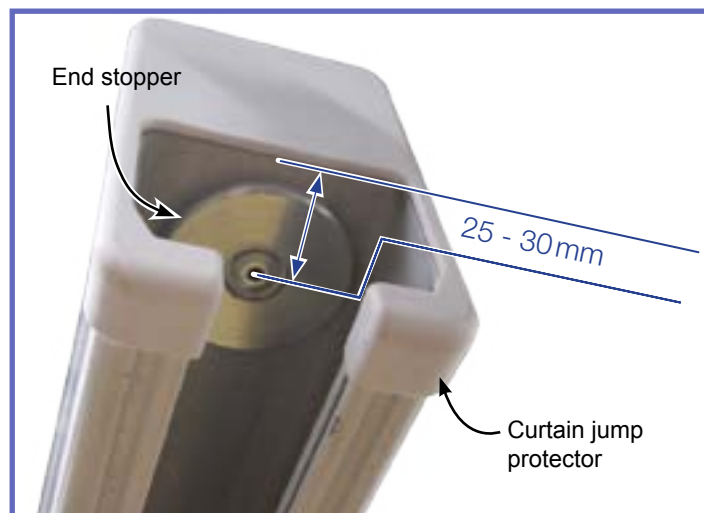


Fig. 2

- 7) Install one (1) sticker at each extremity of the rails. For embedded installations, apply the sticker on the service zone cover.



Fig. 3



Fig. 4