

MAXILITE
Parts List



CE

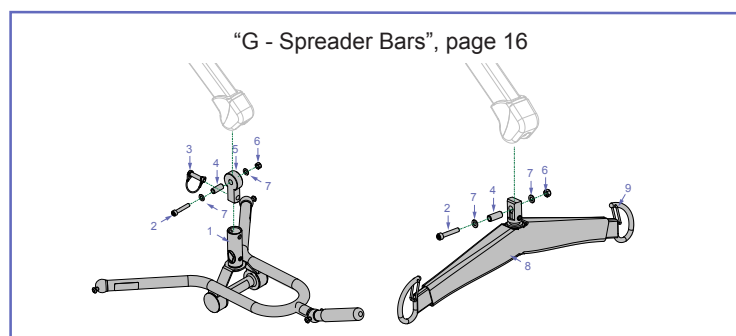
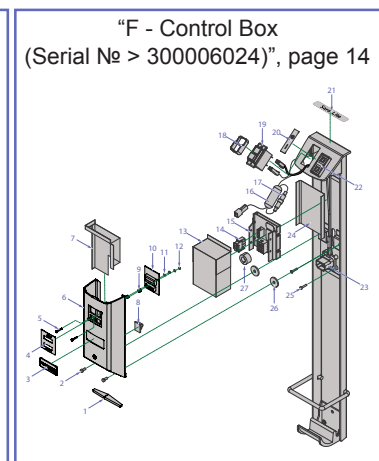
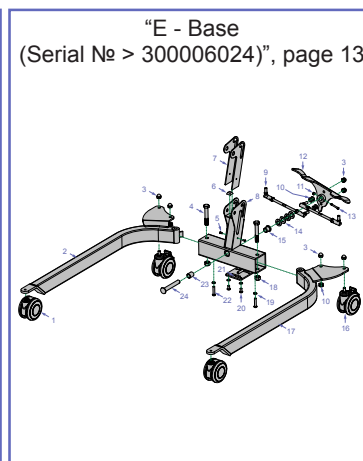
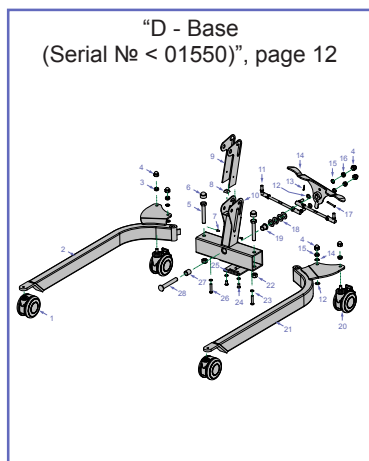
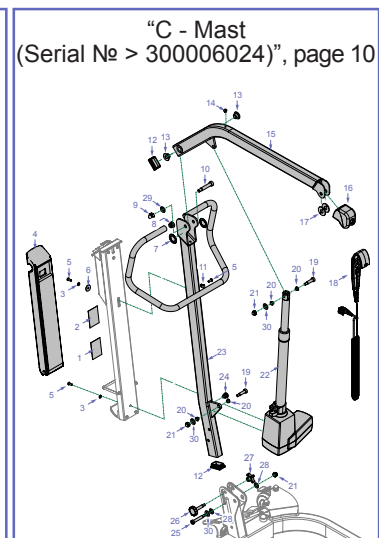
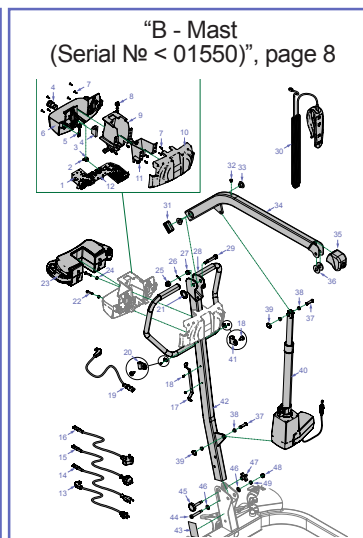
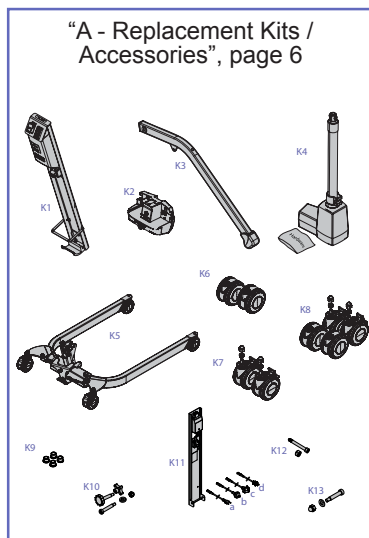
Design Policy and Copyright

® and ™ are trademarks belonging to the ArjoHuntleigh group of companies.
© ArjoHuntleigh 2013.

As our policy is one of continuous improvement, we reserve the right to modify designs without prior notice. The content of this publication may not be copied either whole or in part without the consent of ArjoHuntleigh.

Table of Contents

General Information	4
Product Identification Label	4
How to Read Parts List Tables	5
Exploded Views	6
A - Replacement Kits / Accessories	6
B - Mast (Serial № < 01550)	8
C - Mast (Serial № > 300006024)	10
D - Base (Serial № < 01550)	12
E - Base (Serial № > 300006024)	13
F - Control Box (Serial № > 300006024)	14
G - Spreader Bars	16



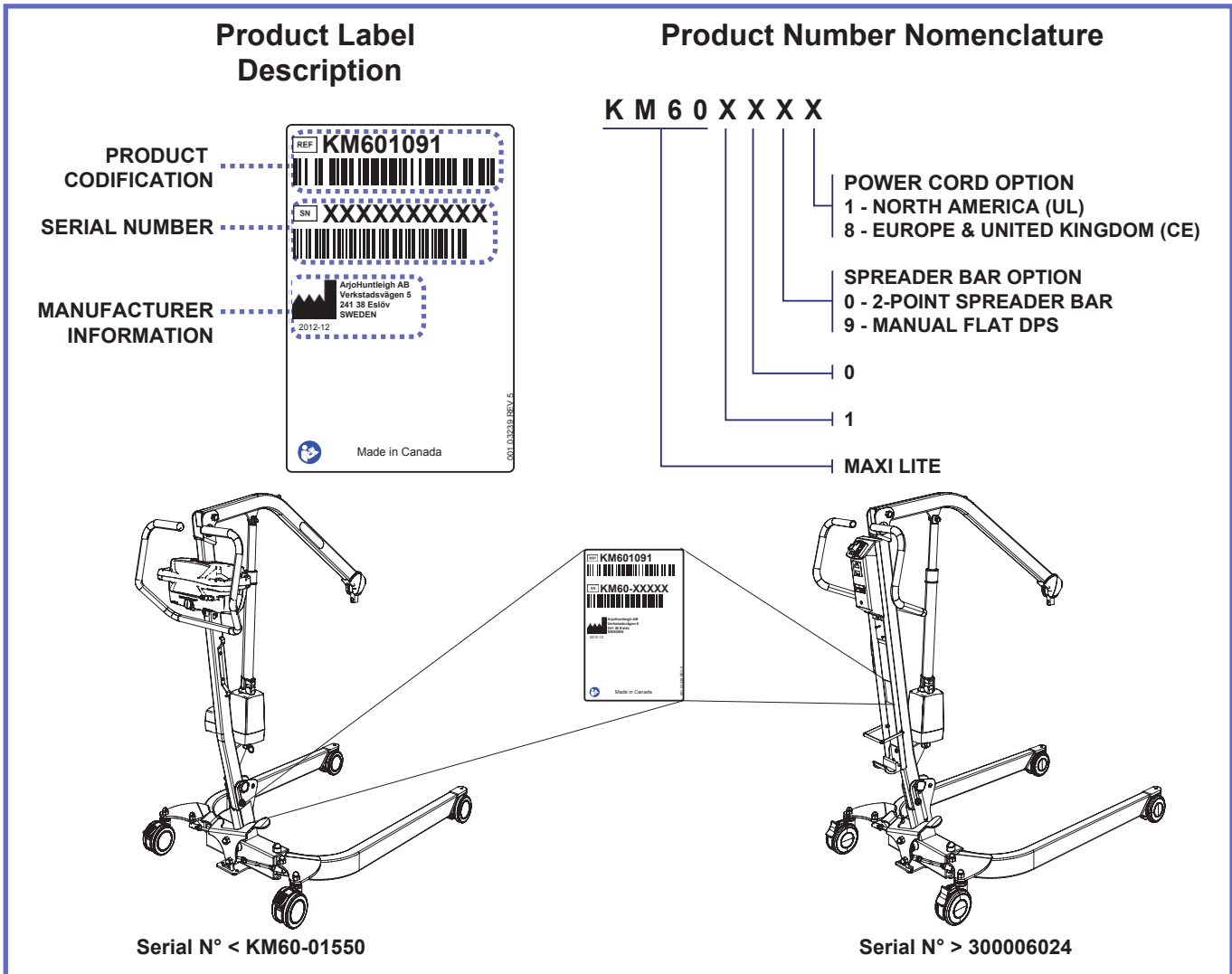
General Information

Before ordering spare parts, study the exploded views closely and make sure that you are familiar with all the spare parts involved.

Before contacting the ArjoHuntleigh Sales department, always have the following information at hand:

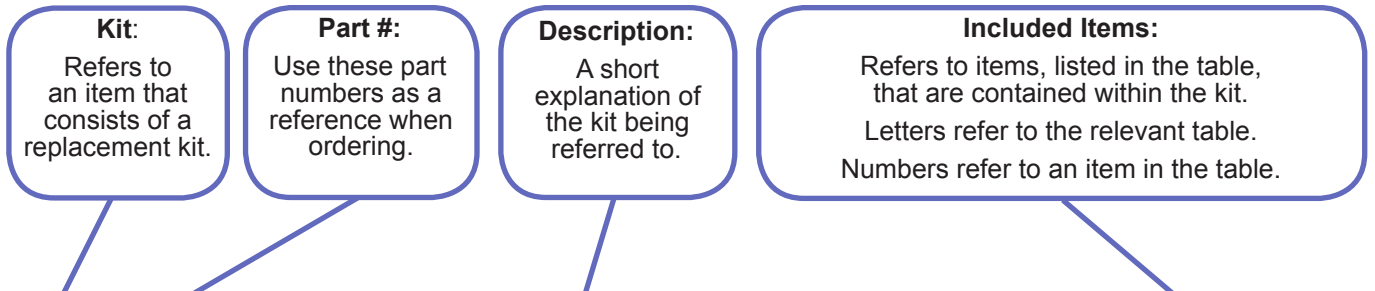
- Correct name of the product (see Product Identification Label below).
- The serial number of the product (see Product Identification Label below).

Product Identification Label



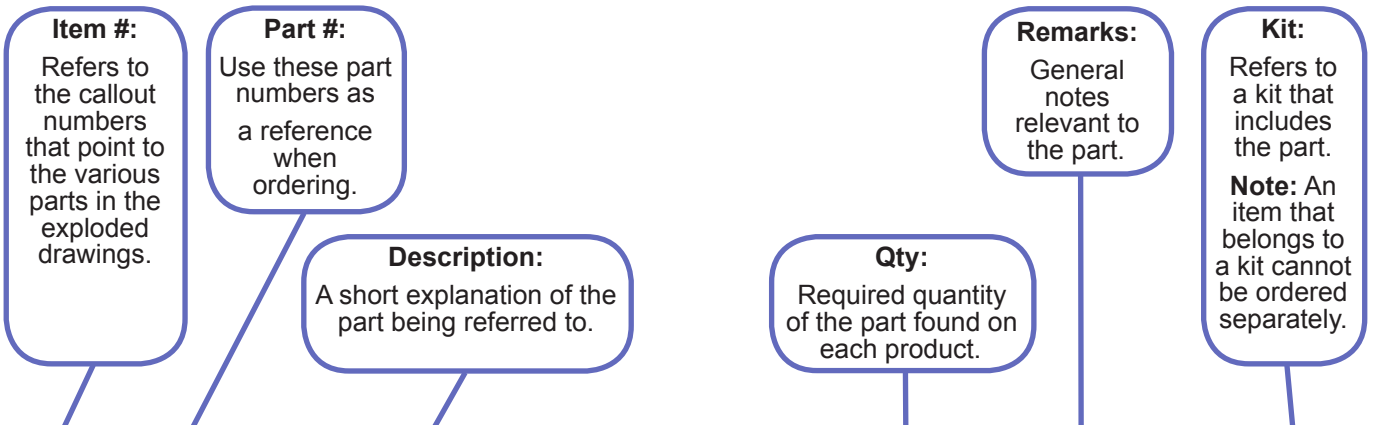
Modifications made to the equipment without ArjoHuntleigh's express acknowledgement will invalidate supplier's product liability.

How to Read Parts List Tables



A *REPLACEMENT KITS TABLE*

Item	Part #	Description	Included Items
K1	700-00001	FIRST REPLACEMENT KIT	B2
K2	700-00002	SECOND REPLACEMENT KIT	B6-B7
K3	700-00003	THIRD REPLACEMENT KIT	B1, B3-B4
K4	700-00004	FOURTH REPLACEMENT KIT	B5



B *PARTS DETAIL TABLE*

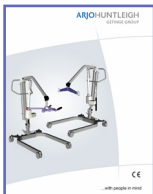
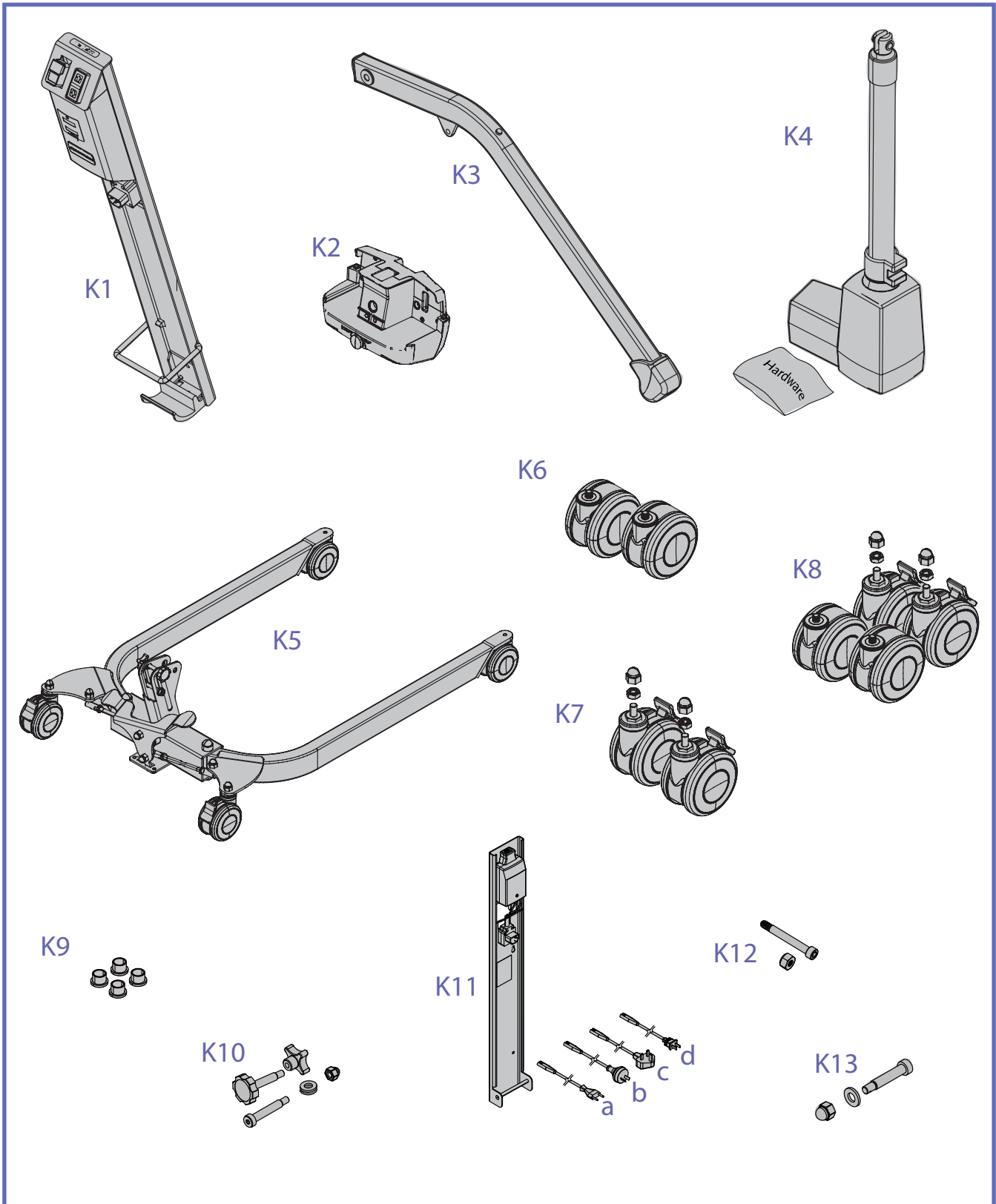
Item	Part #	Description	Qty	Remarks	Kit
1	001-00001	FIRST PART	2		K3
2	001-00002	SECOND PART	2		K1
3	001-00003	THIRD PART	2		K3
4	001-00004	FOURTH PART	1		K3
5	001-00005	FIFTH PART	2		K4
6	001-00006	SIXTH PART	8		K2
7	001-00007	SEVENTH PART	2		K2

Legend

- 1 → Callout for single item
- ① --- Callout for assembly kit
- Assembly lines above components
- Assembly lines behind components
- Text in Green Highlights changes from previous revision

Exploded Views

A - Replacement Kits / Accessories



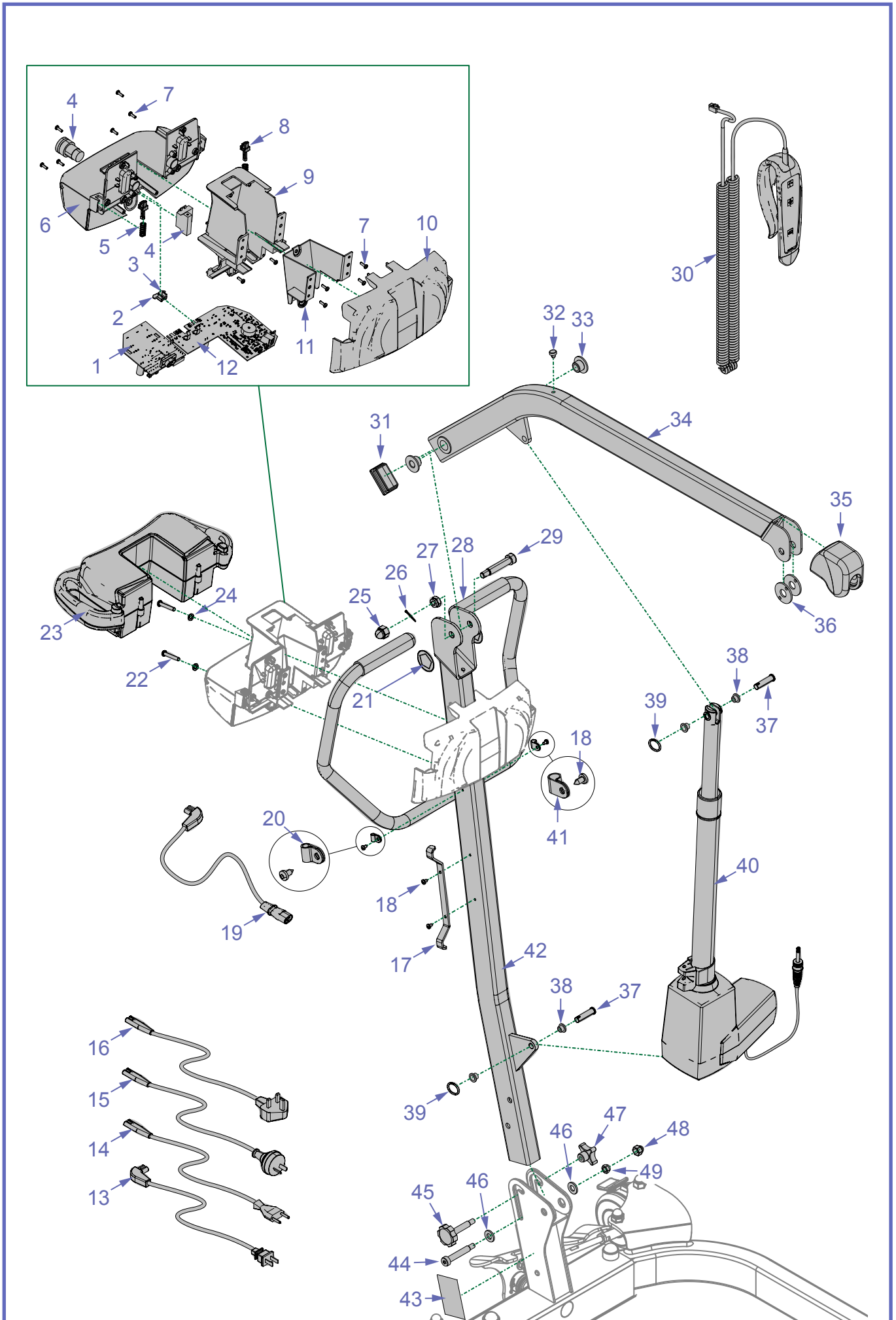
Instruction For Use # 001.23104.**

** Last 2 characters varies according to document's language.

A			
REPLACEMENT KITS / ACCESSORIES			
ITEM	PART #	DESCRIPTION	INCLUDED ITEMS
K1	700-16265-B	CONTROL BOX REPLACEMENT KIT (for serial > 300006024)	F1 - F26
K2	700.16008.2	CONTROL BOX REPLACEMENT KIT (for serial < 01550)	B1 - B12
K3	700.23122	BOOM ASSY REPLACEMENT KIT	C9 - C10, C12 - C17, G2, G4, G6, G7
K4	700.06610-2	ACTUATOR KIT (for serial < 01550)	B37 - B40
	700-20007	ACTUATOR KIT (for serial > 300006024)	C19 - C22
K5	700.23115	BASE ASSY REPLACEMENT KIT	C21, C25, C28, E1 - E24
K6	700-00088	FRONT WHEEL ASSY REPLACEMENT KIT	E1 (See Note 1)
K7	700-00095	REAR WHEEL ASSY REPLACEMENT KIT	E3, E16 (See Note 1)
K8	700-00093	FOUR WHEEL ASSY REPLACEMENT KIT	E1, E3, E16
K9	700-34040	ACTUATOR BUSHING REPLACEMENT KIT	B38 (C20)
K10	700.17350	MAST ATTACHMENT REPLACEMENT KIT	C21, C25 - C28 (See Note 2)
K11	NDA8200-INT	WALL MOUNTED CHARGER (for serial > 300006024)	INCLUDES ITEMS K11a - K11c
a	402.00003	CLASS 2 SPT CORDSET CE	-
b	402.00004	CLASS 2 SPT CORDSET AU	-
c	402.00005	CLASS 2 SPT CORDSET UK	-
d	402-00099	CLASS 2 SPT CORDSET UL	-
K12	700-23118	PEDAL FASTENING KIT	E11, E13 (See Note 2)
K13	700-23126	BOOM ATTACHEMENT REPLACEMENT KIT	C9, C10, C29 (See Note 2)

- Note 1: For units with serial № below KM60-01550, replace all four wheels if unit is equipped with original wheels so that all wheels are of similar appearance.
- Note 2: New attachment method, compatible with all previous models.

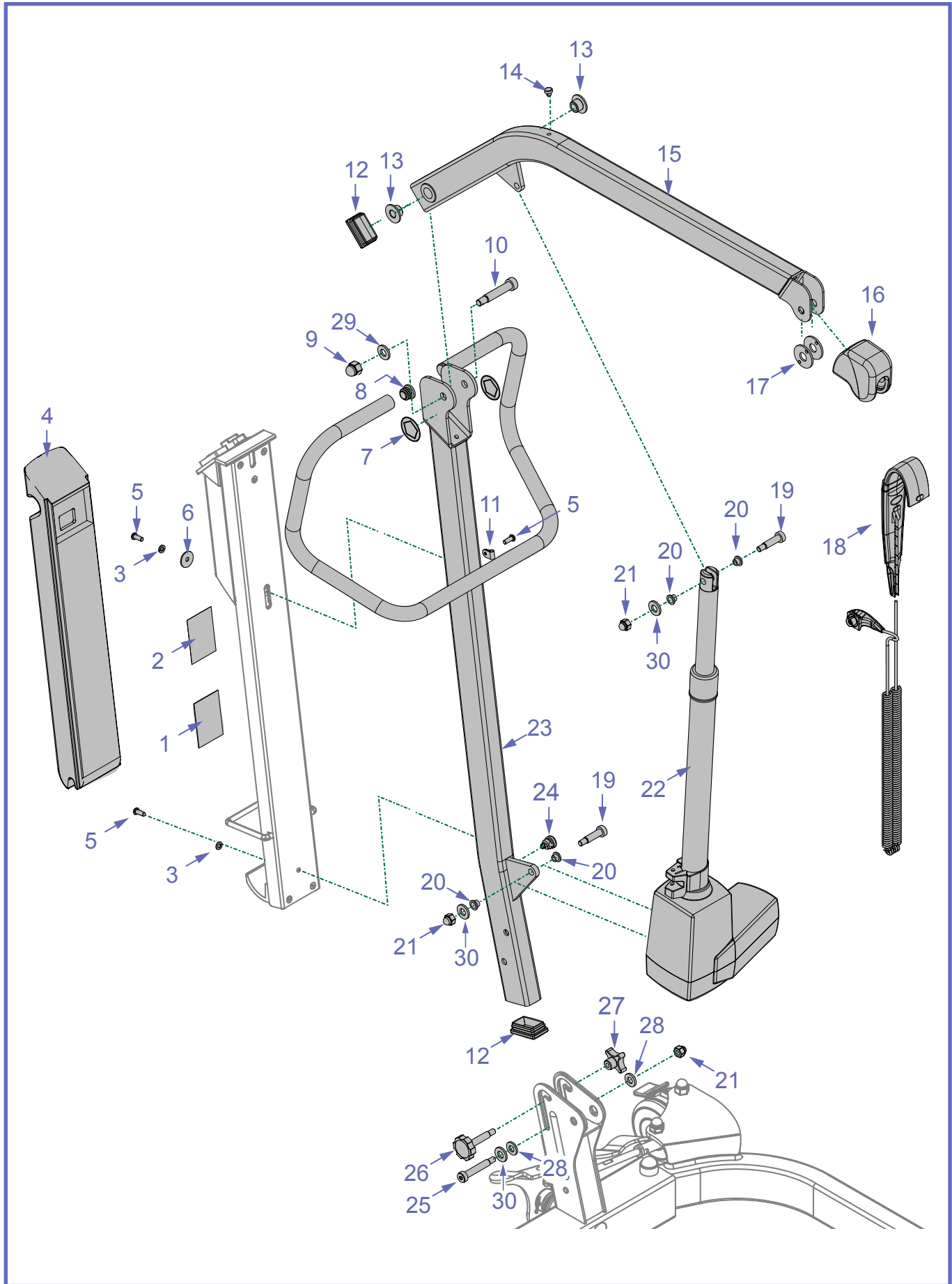
B - Mast (Serial № < 01550)



001-23107 rev. 2

B					
MAST (SERIAL № < 01550)					
ITEM	PART #	DESCRIPTION	QTY	REMARKS	KIT
1	492-00031-4-B	PCB BATTERY CHARGER	1		
2	200.16240	PUSH BUTTON CTRL BOX RIGHT	1		
3	200.16230	PUSH BUTTON CTRL BOX LEFT	1		
4	C6P22MM	EMERGENCY STOP SWITCH	1		
5	000.00881	SPRING COMP. 10 X 25 X 1.0 ZP	2		
6	200.16005	CTRL BOX FRONT 'ABDE'	1		
7	000.02480	Screw 4.0 X 12 'PLASTITE'	20		
8	200.16250	CONTROL BOX LATCH	2		
9	250.16100	CONTROL BOX MIDDLE	1		K2
10	200.16050	CONTROL BOX BACK	1		K2
11	200.16260	BRACKET STEEL CTRL BOX	1		
12	492-00045-3-B	PCB LIFT CONTROL	1		
13	402.00013	CLASS 2 SJT CORDSET 90° UL	1	Lifts are delivered with one cord according to destination country	
14	402.00003	CLASS 2 SPT CORDSET CE			
15	402.00004	CLASS 2 SPT CORDSET AU			
16	402.00005	CLASS 2 SPT CORDSET UK			
17	236.20800	POWER CORD BRACKET	1		
18	000.00635	TAP SCREW ST4.2mm X 9.5mm TORX	4		
19	402.00027	CONTROL BOX CABLE CLASS 2 SJT 90°	1		
20	E0295	CABLE CLAMP 3/16"	1		
21	001.20808	STICKER SWL 160KG MAXI LITE	2		
22	000.03140	SCREW M6 X 35mm BUTTON ZINC	2		
23	700.16200	BATTERY PACK ASSEMBLY	1		
24	000.03420	LOCKWASHER M6 ZINC	2		
25	000.04422	BLACK PLASTIC CAP M10	1		
26	000.01800	COTTER PIN 2mm X 20mm ZINC	1		K13
27	000.04410	LOCKNUT M10 ZINC	1		K13
28	M5715	BLACK RUBBER HANDLE 7/8"	2		
29	000.04605	SHOULDER 12 X 50 M10	1		K13
30	700-13830-B	2 BUTTONS HANDSET	1		
31	000.20146	TUBE INSERT 1 1/4" X 2" 10-14GA BLACK	1		
32	000.20186	BUMPER FLAT HEAD SPLIT	1		
33	200.20250	BOOM BUSHING	2		
34	236.23122	BOOM	1		K3
35	000.20520	BOOM END CAP BLACK	1		
36	KTX01580.0	FRICTION DISK	2		
37	203.06150	CLEVIS 10 X 38.5mm	2	Replace with C19 and C21	
38	034040-B	BUSHING ACTUATOR LA-34	4		K9
39	000.00921	SPLIT RING	2	Replace with C19 and C21	
40	E6520	LA-34-350 ACTUATOR	1		K4
41	E0296	CABLE CLAMP 5/16"	1		
42	236.23116	MAST	1		
43	001.03239	STICKER PRODUCT NAME (KM601091)	1		
44	000.04285	SHOULDER	1		
45	-	KNOB BOLT M8 X 45	1		K10
46	000.04450	FLAT WASHER NYLON	2		
47	000.03965	TURNING KNOB M8	1		
48	000.03815	BLACK PLASTIC CAP M8	1		
49	000.03800	LOCKNUT M8 ZINC	1		

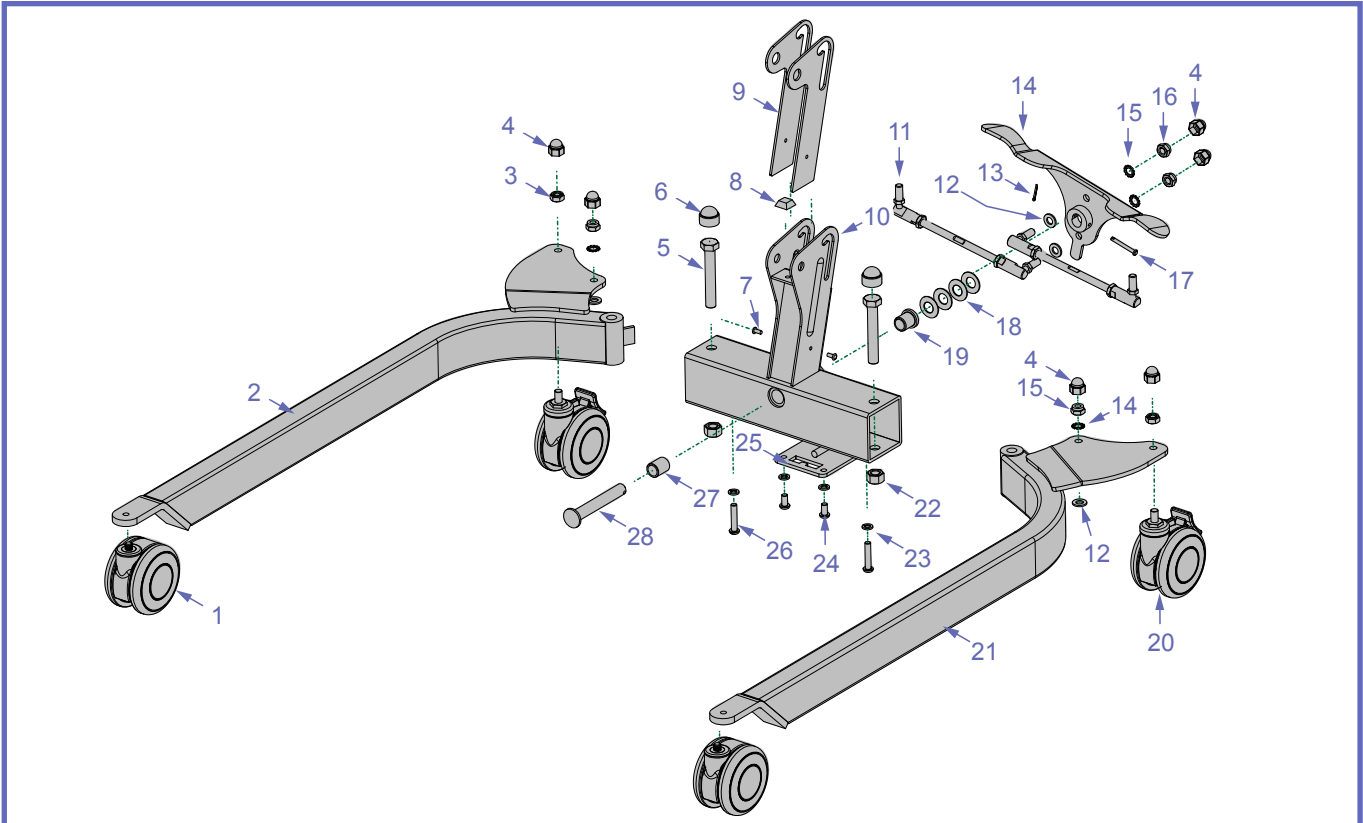
C - Mast (Serial No > 300006024)



001-23107 rev. 2

C					
MAST (SERIAL № > 300006024)					
ITEM	PART #	DESCRIPTION	QTY	REMARKS	KIT
1	001.03239	SERIAL № LABEL (KM601091)	1		
	001.03244	SERIAL № LABEL (KM601098)			
	001-03277	SERIAL № LABEL (KM601001)			
2	001-00125	LABEL PROD MAXI LITE KM60XXXX	1		
3	000.03420	LOCKWASHER M6 ZP	2		
4	NDA0100-20	BATTERY ARJOHUNTLEIGH GREY	1		
5	000.03105	SCREW M6 X 16 BUTTON ZP	3		
6	000.03450	FLAT WASHER M6 (25 OD), ZP STEEL	1		
7	001.20808	STICKER SWL 160KG	2		
8	M6025	TUBE INSERT ø7/8" 10-12GA BLACK	2		
9	000-04403	ACORN NUT M10	1		
10	000-04606	SHOULDER 12 X 50 (M10) ADH	1		
11	E0295	CABLE CLAMP 3/16	1		
12	000.20146	TUBE INSERT 1 1/4" X 2" 10-14GA BLACK	1		
13	200.20250	BOOM BUSHING	2		
14	000.20186	BUMPER FLAT HEAD SPLIT	1		
15	236.23122	BOOM	1		K3
16	000.20520	BOOM END CAP BLACK	1		
17	KTX01580.0	FRICTION DISK	2		
18	8560008	HANDSET 2 FCT 90° CONNECT	1		
19	000.04283	SHOULDER 10 X 30 (M8) ADH	2		
20	034040-B	BUSHING ACTUATOR LA-34	4		K9
21	000-03803	ACORN NUT M8 BLACK	3		
22	400-20005	LA-34-350 ACTUATOR	1		K4
23	236-23117	MAST	1		
24	E7530	BLACK STRAIN RELIEF	1		
25	000.04285	SHOULDER 10 X 50 (M8)	1		
26	-	KNOB SCREW M8 X 45	1		K10
27	000.03965	KNOB NUT M8	1		
28	000.04450	FLAT WASHER NYLON M10 X 2.5T	2		
29	000-04404	LOCKWASHER M10 BLACK	1		
30	000-03804	FLAT WASHER M8 BLACK	3		

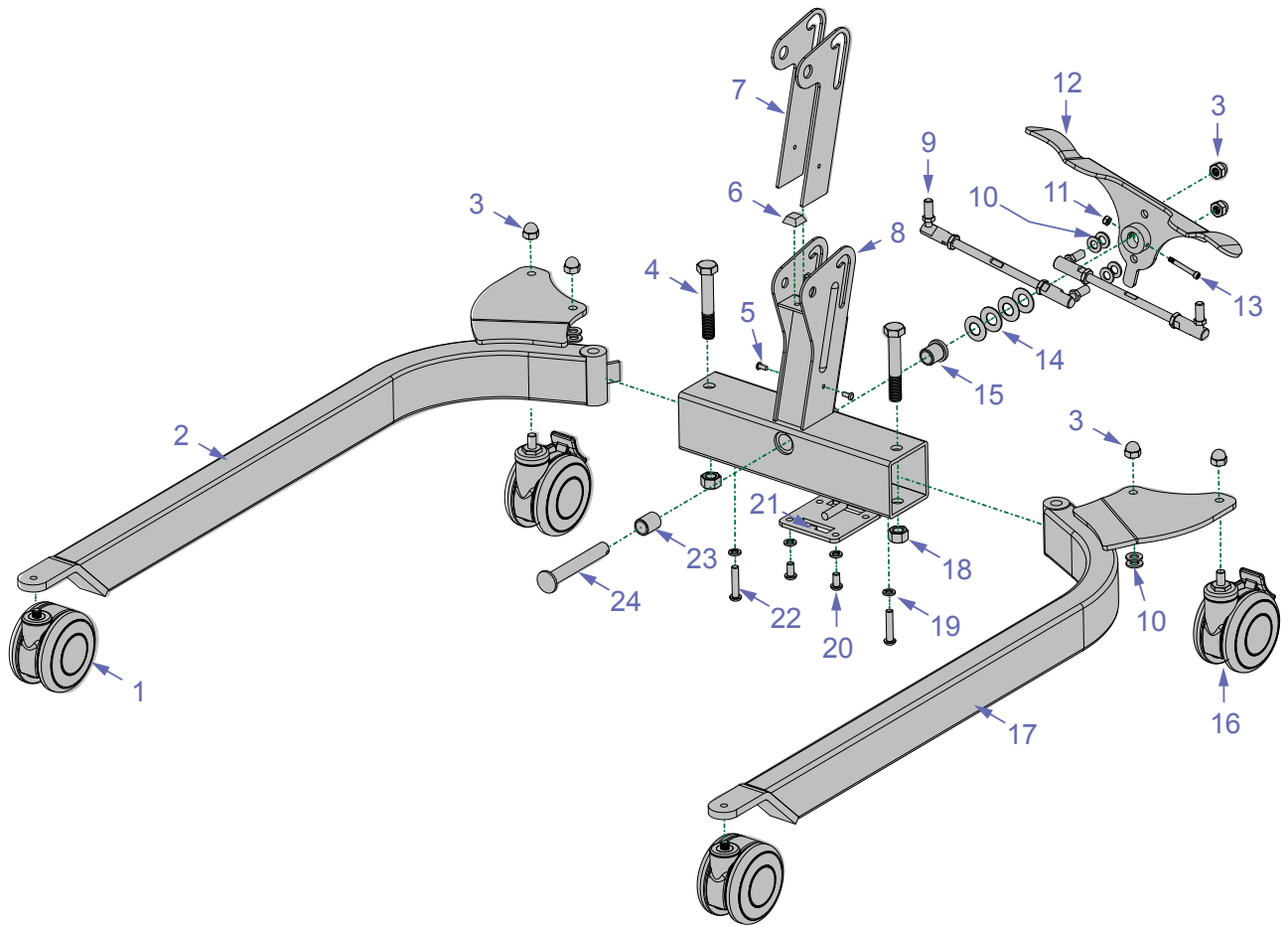
D - Base (Serial No < 01550)



D					
BASE (SERIAL No < 01550)					
ITEM	PART #	DESCRIPTION	QTY	REMARKS	KIT
1	000.20430	WHEEL ø102mm (4") SWIVEL	2		K8
2	236.23001	RIGHT LEG	1		
3	000.04411	LOCKNUT FUJILOK M10 ZINC	2		
4	000.04422	PLASTIC CAP M10 BOLT BLACK	6		
5	000.05000	SCREW M14 X 90 HEX ZINC	2		
6	000.05015	CAP PLASTIC SCREW M14 BLACK	2		
7	000.00895	POP RIVET 3/16 1/8-1/4 ALUM	2		
8	000.20188	BLACK BUMPON SJ-5023	1		
9	200.23112	SLIDING PLATE	2		
10	236-23118	BASE	1		
11	000.20120	TIE ROD END KIT 213mm LR	2		
12	000.04430	FLAT WASHER M10, ZP STEEL	4		
13	000.00860	COTTER PIN 3/32 X 3/4 ZP	1		K12
14	236.23132	PEDAL SHIFTER	1		
15	000.04426	STARWASHER M10 ZINC	6		
16	000.04410	LOCKNUT M10 ZINC	4		
17	000.00898	CLEVIS PIN 3/16 X 1-1/2 TO HOLE	1		K12
18	000.04920	SPRING WASHER 1 1/4OD X 0.630ID	4		
19	000.05460	BUSHING 5/8"-13/16" X 1" FLANGE (MFI)	1		
20	000.20435	WHEEL ø102mm TOTAL LOCK	2		K8
21	236.23006	LEFT LEG	1		
22	000.05010	LOCKNUT STOVER M14 ZINC	2		
23	000.03960	LOCKWASHER M8 ZINC	4		
24	000.03613	SCREW M8 X 16 BUTTON ZINC	2		
25	236.20095	SHIFTER PEDAL	1		
26	000.03690	SCREW M8 X 40 BUTTON ZINC	2		
27	000.05462	BUSHING 5/8"-13/16" X 1" (MSI)	1		
28	236.23114	PEDAL SHAFT	1		

001-23107 rev. 2

E - Base (Serial No > 300006024)

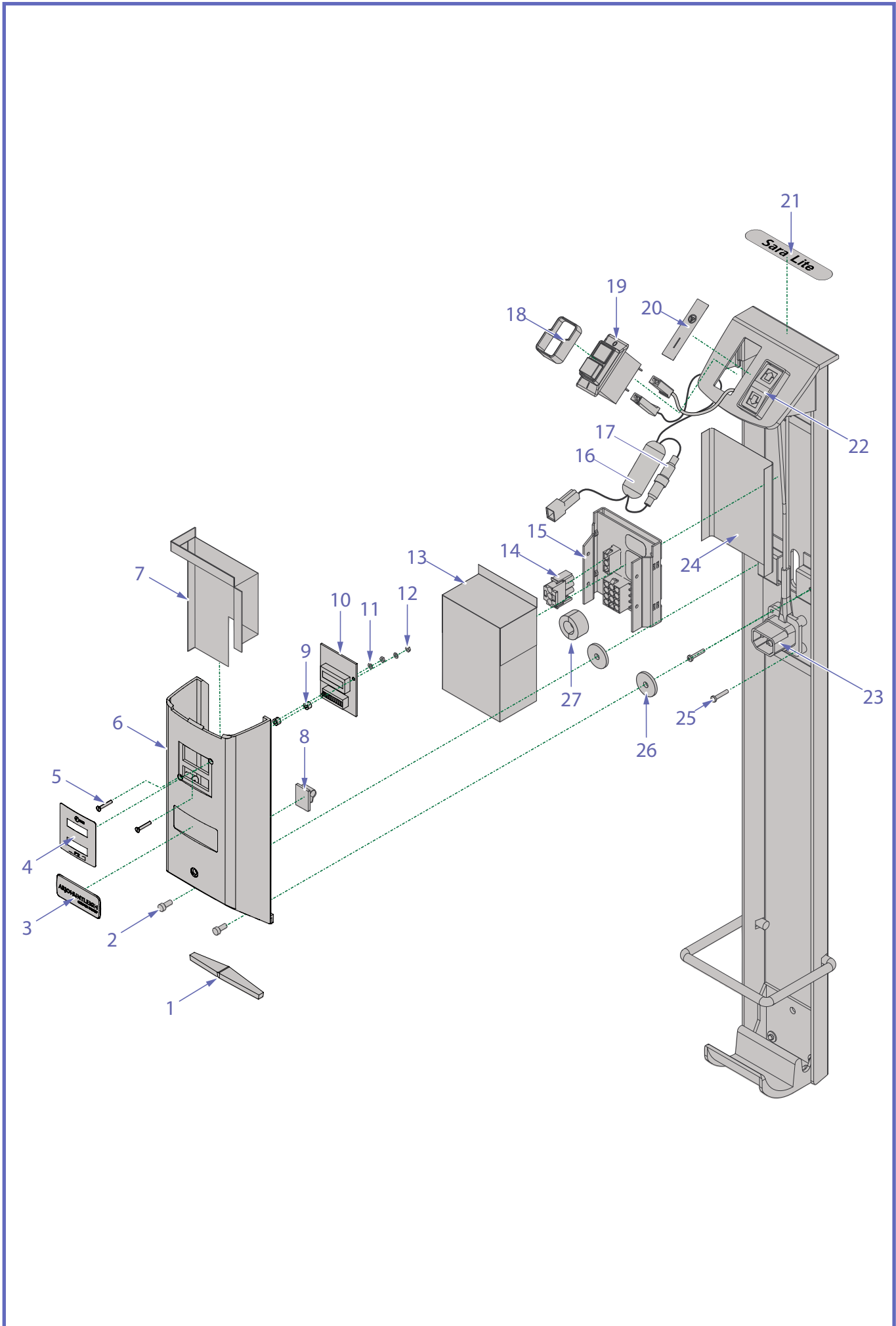


E BASE (SERIAL No > 300006024)

ITEM	PART #	DESCRIPTION	QTY	REMARKS	KIT
1	000.20480	LIGHT GREY DIA 100MM SWIVEL WHEEL	2		K6, K8
2	236.23001	RIGHT LEG	1		
3	000-04403	ACORN NUT M10 BLACK ZINC	6		
4	000.05001	SCREW M14 X 90 HEX BLACK ZINC	2		
5	000.00895	POP RIVET 3/16 1/8-1/4 ALUM	2		
6	000.20188	BLACK BUMPON SJ-5023	1		
7	200.23112	SLIDING PLATE	2		
8	236-23118	BASE	1		
9	000.20120	TIE ROD END KIT 213MM LR	2		
10	000.20070	FLAT WASHER M10-4T	8		
11	000.00160	LOCKNUT 10-24	1		K12
12	236.23132	PEDAL SHIFTER	1		
13	000-23132	SCREW PEDAL	1		K12
14	000.04920	SPRING WASHER 1 1/4OD X 0.630ID	4		
15	000.05460	BUSHING 5/8"-13/16" X 1" FLANGE (MFI)	1		
16	000.20485	WHEEL ø100MM TOTAL LOCK LT GRAY	2		K7, K8
17	236.23006	LEFT LEG	1		
18	000.05010	LOCKNUT STOVER M14 ZINC	2		
19	000.03960	LOCKWASHER M8 ZINC	4		
20	000.03613	SCREW M8 X 16 BUTTON ZINC	2		
21	236.20095	SHIFTER PEDAL	1		
22	000.03690	SCREW M8 X 40 BUTTON ZINC	2		
23	000.05462	BUSHING 5/8"-13/16" X 1" (MSI)	1		
24	236.23114	PEDAL SHAFT	1		

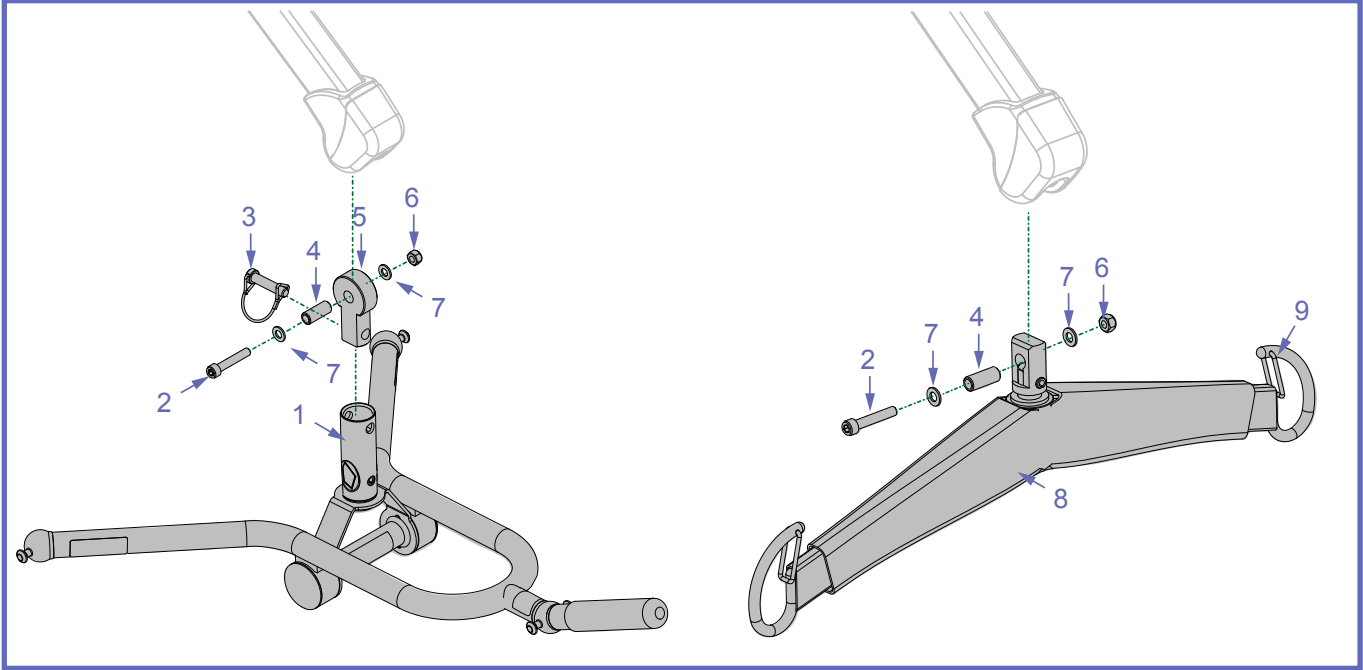
001-23107 rev. 2

F - Control Box (Serial № > 300006024)



F CONTROL BOX (SERIAL Nº > 300006024)					
ITEM	PART #	DESCRIPTION	QTY	REMARKS	KIT
1	HMX981	FOAM RUBB STRIP BATTERY	2		
2	HMX420	M4 X 10 PHILLIPS SCREW	2		
3	8418700	"ARJOHUNTLEIGH" STICKER	1		
4	HMX913	LABEL HOURS RUN	1		
5	HMX925	M2.5 X 16 FLAT SCREW	2		
6	HMX973	ELECTRICAL COVER	1		
7	200-25134	FILM PLASTIC PROTECTOR BDI	1		
8	450-00159	WIRE CLIP LATCH .19" SELF ADH	1		
9	HMX1054	SPACER 3.1 X 6 X 4	2		
10	HMX974	BATTERY STATUS INDICATOR	1		
11	HMX875	M2.5 WASHER	2		
12	HMX873	M2.5 NUT	2		
13	200-25135	FILM PLASTIC PROTECTION MOT BRD	1		
14	450.00315	MATE-N-LOCK PLUG 3	1		
15	492.20800-B	PCB ASSY	1		
16	402.16265	FUSE HOLDER IN-LINE ASSY	1	INCLUDES ITEM 17	
17	405-26001	FERRITE CLAMP-ON 6.6 mm	1		
18	KKX21360-00	BEZEL	1		
19	460.20800	10A BREAKER SWITCH	1		
20	001-26602	ON/OFF STICKER	1		
21	001-00133	MAXI LITE PRODUCT STICKER	1		
22	HMX998	SWITCH H/L	1		
23	HMX1060	CABLE ASS'Y LEC BULGIN PLUG	1		
24	001.00026	MEDIBO CONTROL BOX MICA	1		
25	S3452	M3 X 16 PHILLIPS SCREW	2		
26	HMX332	NYLON RING DIA. 4.3 X 18 X 2	2		
27	405.20800	FERRITE 10 mm	1		

G - Spreader Bars



G					
SPREADER BARS					
ITEM	PART #	DESCRIPTION	QTY	REMARKS	KIT
1	700-19205	DPS FLAT MANUEL - MAXI LITE	1		
2	000.03726	SCREW M8 X 45 SOCKET ZINC	1		
3	000.00927	CLEVIS PIN 3/8 X 1 3/8 CLIP	1		
4	203.23123	PIVOT TUBE	1		
5	200.23124	SPREADER BAR HOLDER	5		
6	000.03802	LOCKNUT STOVER M8 ZINC	1		
7	000.03895	FLAT WASHER M8 ZINC	2		
8	361.05495.33	2-POINT SPREADER BAR CUSHION TOP	1		
9	200.05466	SAFETY LATCH	2		

AUSTRALIA

ArjoHuntleigh Pty Ltd
78, Forsyth street
O'Connor
AU-6163 Western Australia
Tel: +61 89337 4111
Free: +1 800 072 040
Fax: + 61 89337 9077

BELGIQUE / BELGIË

ArjoHuntleigh NV/SA
Evenbroekveld 16
BE-9420 ERPE-MERE
Tél/Tel: +32 (0) 53 60 73 80
Fax: +32 (0) 53 60 73 81
E-mail: info@arjohuntleigh.be

BRASIL

Maquet do Brasil
Equipamentos Médicos Ltda
Rua Tenente Alberto Spicciati, 200
Barra Funda, 01140-130
SÃO PAULO, SP - BRASIL
Fone: +55 (11) 2608-7400
Fax: +55 (11) 2608-7410

CANADA

ArjoHuntleigh
90 Matheson Boulevard West
Suite 300
CA-MISSISSAUGA, ON, L5R 3R3
Tel/Tél: +1 905 238 7880
Free: +1 800 665 4831 Institutional
Free: +1 800 868 0441 Home Care
Fax: +1 905 238 7881
E-mail: info.canada@arjohuntleigh.com

ČESKÁ REPUBLIKA

ArjoHuntleigh s.r.o.
Hlinky 118
CZ-603 00 BRNO
Tel: +420 549 254 252
Fax: +420 541 213 550

DANMARK

ArjoHuntleigh A/S
Vassingerødvej 52
DK-3540 LYNGE
Tel: +45 49 13 84 86
Fax: +45 49 13 84 87
E-mail:
dk_kundeservice@arjohuntleigh.com

DEUTSCHLAND

ArjoHuntleigh GmbH
Peter-Sander-Strasse 10
DE-55252 MAINZ-KASTEL
Tel: +49 (0) 6134 186 0
Fax: +49 (0) 6134 186 160
E-mail: info-de@arjohuntleigh.com

ΕΛΛΑΔΑ

C. Psimitis Co Ltd
Dimitriou Andr. 59
GR-16121 KAISARIANI ATTIKIS
Τηλ: 21 0724 36 68
Φάξ: 21 0721 55 53

ESPAÑA

ArjoHuntleigh Ibérica S.L.
Ctra. de Rubí, 88 1ª planta - A1
08173 Sant Cugat del Vallés
ES- BARCELONA 08173
Tel: +34 93 583 11 20
Fax: +34 93 583 11 22
E-mail: info.es@arjohuntleigh.com

FRANCE

ArjoHuntleigh SAS
2 Avenue Alcide de Gasperi
CS 70133
FR-59436 RONCQ CEDEX
Tél: +33 (0) 3 20 28 13 13
Fax: +33 (0) 3 20 28 13 14
E-mail: info.france@arjohuntleigh.com

HONG KONG

ArjoHuntleigh (Hong Kong) Ltd
1510-17, 15/F, Tower 2
Kowloon Commerce Centre
51 Kwai Cheong Road
Kwai Chung
HONG KONG
Tel: +852 2207 6363
Fax: +852 2207 6368

INTERNATIONAL

ArjoHuntleigh International Ltd.
ArjoHuntleigh House
Houghton Hall Park
Houghton Regis
UK-DUNSTABLE LU5 5XF
Tel: +44 (0) 1582 745 800
Fax: +44 (0) 1582 745 866
E-mail:
international@arjohuntleigh.com

ITALIA

ArjoHuntleigh S.p.A.
Via di Tor Vergata 432
IT-00133 ROMA
Tel: +39 (0) 6 87426211
Fax: +39 (0) 6 87426222
E-mail: Italy.promo@arjohuntleigh.com

NEDERLAND

ArjoHuntleigh Nederland BV
Biezenwei 21
4004 MB TIEL
Postbus 6116
4000 HC TIEL
Tel: +31 (0) 344 64 08 00
Fax: +31 (0) 344 64 08 85
E-mail: info.nl@arjohuntleigh.com

NEW ZEALAND

ArjoHuntleigh Ltd
41 Vestey Drive
Mount Wellington
NZ-AUCKLAND 1060
Tel: +64 (0) 9 573 5344
Free Call: 0800 000 151
Fax: +64 (0) 9 573 5384
E-mail: nz.info@ArjoHuntleigh.com

NORGE

ArjoHuntleigh Norway AS
Olaf Helsets vei 5
N-0694 OSLO
Tel: +47 22 08 00 50
Faks: +47 22 08 00 51
E-mail: no.kundeservice@arjohuntleigh.com

ÖSTERREICH

ArjoHuntleigh GmbH
Dörrstrasse 85
AT-6020 INNSBRUCK
Tel: +43 (0) 512 204 160 0
Fax: +43 (0) 512 204 160 75

POLSKA

ArjoHuntleigh Polska Sp. z o.o.
ul. Ks Piotra Wawrzyniaka 2
PL-62-052 KOMORNIKI (Poznan)
Tel: +48 61 662 15 50
Fax: +48 61 662 15 90
E-mail: arjo@arjohuntleigh.com

PORTUGAL

ArjoHuntleigh em Portugal:
MAQUET Portugal, Lda. (Distribuidor Exclusivo)
Rua Poeta Bocage n.º 2 - 2G
PT-1600-233 Lisboa
Tel: +351 214 189 815
Fax: +351 214 177 413
E-mail: Portugal@arjohuntleigh.com

SUISSE / SCHWEIZ

ArjoHuntleigh AG
Fabrikstrasse 8
Postfach
CH-4614 HÄGENDORF
Tél/Tel: +41 (0) 61 337 97 77
Fax: +41 (0) 61 311 97 42

SUOMI

Oy Vestek AB
Martinkuja 4
FI-02270 ESPOO
Puh: +358 9 8870 120
E-mail: info@vestek.fi

SVERIGE

ARJO Scandinavia AB
Hans Michelsensgatan 10
SE-211 20 MALMÖ
Tel: +46 (0) 10 494 7760
Fax: +46 (0) 10 494 7761
E-mail: kundservice@arjohuntleigh.com

UNITED KINGDOM

ArjoHuntleigh UK
ArjoHuntleigh House
Houghton Hall Park
Houghton Regis
UK-DUNSTABLE LU5 5XF
Tel: +44 (0) 1582 745 700
Fax: +44 (0) 1582 745 745
E-mail:
sales.admin@arjohuntleigh.com

USA

ArjoHuntleigh Inc.
2349 W Lake Street Suite 250
US-Addison, IL 60101
Tel: +1 630 307 2756
Free: +1 800 323 1245 Institutional
Free: +1 800 868 0441 Home Care
Fax: +1 630 307 6195
E-mail: us.info@arjohuntleigh.com

ARJOHUNTLEIGH

GETINGE GROUP

GETINGE GROUP is a leading global provider of products and systems that contribute to quality enhancement and cost efficiency within healthcare and life sciences. We operate under the three brands of **ArjoHuntleigh**, **GETINGE** and **MAQUET**. **ArjoHuntleigh** focuses on patient mobility and wound management solutions. **GETINGE** provides solutions for infection control within healthcare and contamination prevention within life sciences. **MAQUET** specializes in solutions, therapies and products for surgical interventions and intensive care.

www.ArjoHuntleigh.com

 **ArjoHuntleigh AB**
Hans Michelsengatan 10
211 20 Malmö
SWEDEN