

ARJOHUNTLEIGH

GETINGE GROUP

SARA LITE

THE VERSATILE BASIC STANDING
AND RAISING AID



...with people in mind



A NEW MEMBER OF THE SARA FAMILY

This new standing and raising aid is designed to fulfil basic needs for a versatile, easy-to-use lift. By combining contemporary design values and a good value concept, *SARA Lite* offers an attractive solution, visually and economically. *SARA Lite* is a valuable asset for simply enhancing quality of life in care facilities and home care settings. *SARA Lite* joins *SARA³⁰⁰⁰* and *SARA Plus* to complete the comprehensive range of ArjoHuntleigh standing and raising aids.

Handles



A reassuringly secure grip for the resident during raising / lowering.

Dual controls



Enables optimum working position and close contact with the resident at all times.

Leg & knee support



The soft leg support / kneepad can be adjusted both vertically and laterally to ensure individual comfort.

Knee strap



Provides extra stability or firm support when a resident cannot fully control leg movements.

Chassis legs



The powered adjustable chassis legs can be opened to provide better access to a wheelchair, day chair or toilet.

Footboard



The footboard's black plastic covering has anti-slip properties that improve the resident's footing and increase safety.



SIMPLY ENHANCING QUALITY OF LIFE

Care routines with a lighter touch

SARA Lite is a battery-powered standing and raising aid designed to raise and lower semi-dependent residents for transfers and toileting. The lift can be operated safely and efficiently by a single carer. Weighing just 59 kg *SARA Lite* is an easy-to-use solution with the flexibility to benefit a wide range of care settings.

Resident benefits

- **Optimum stimulation** – *SARA Lite*, intended for semi-dependent residents like *Carl* (see back cover), helps stimulate and maintain mobility for as long as possible.
- **Full support** – Transfers are performed safely and gently with full support. The sling with a double-fastening chest strap maximises resident comfort.
- **Extra security** – If a resident requires additional security, the knee strap ensures that the knees are positioned safely and correctly.

Carer benefits

- **Safer handling** – *SARA Lite* makes carer's everyday care routines easier and safer, as no manual lifting is needed.
- **Ergonomic routines** – Every aspect of the machine is ergonomically designed to ensure ergonomic and comfortable working postures.
- **Improved efficiency** – Transfers to and from the toilet, chair, edge of the bed or wheelchair can be performed efficiently under handset control.

Transfer from bed



Transfer to chair

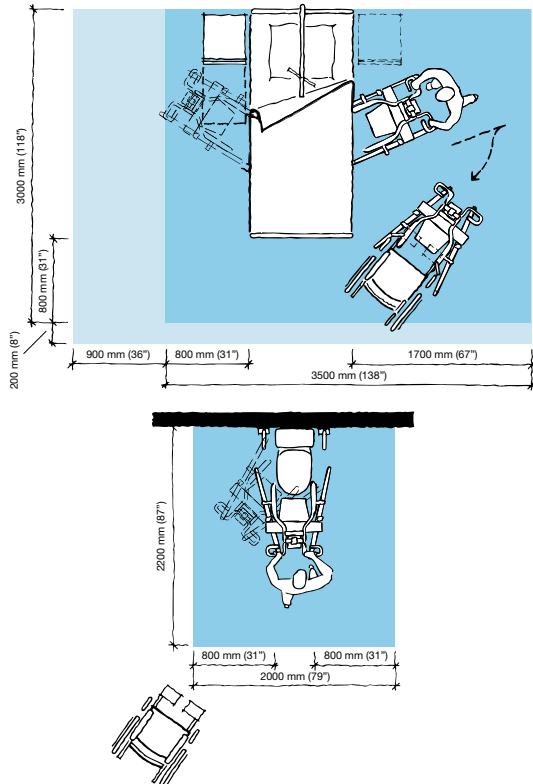


Transfer to wheelchair



PRODUCT SPECIFICATIONS

Space requirement



- Blue area shows the minimum working area required for the staff to be able to use the mechanical aids in an ergonomic way from one side.
- Light blue area shows required extension of working area to facilitate activities from either side to provide adequate access for the resident, mechanical aid and assisting carer.

Mobility Gallery

Suitable for Carl



C Carl, who sits in a wheelchair and has little capacity to support himself

Please contact ArjoHuntleigh for further information on the Mobility Gallery™.

Product information

Max. safe working load	175 kg (385 lbs)
Weight	59 kg (130 lbs)
Total length	949 mm (37 3/8")
Min. lifting height	1030 mm (40 5/8")
Max. lifting height	1628 mm (64 1/8")
Total height	1200 mm (47 1/4")
Height of chassis	113 mm (4 3/8")
External width legs closed	639 mm (25 1/8")
Internal width legs open	820 mm (32 1/4")

Low friction castors, the rear two with brakes

Battery 24V 4Ah

One (1) battery and one (1) charger are supplied with each Sara Lite

Protection class Lifter IPX4
Handset IPX7

Battery Discharge Indicator (BDI) – Displays remaining power and indicates when the battery needs charging

Service meter – Displays the total motor usage time

Emergency stop and system failure override

Approvals

The product is in compliance with current legislation and applicable product standards

Only ArjoHuntleigh designed parts, which are designed specifically for the purpose, should be used on the equipment and products supplied by ArjoHuntleigh. As our policy is one of continuous development we reserve the right to modify designs and specifications without prior notice.

© and ™ are trademarks belonging to the ArjoHuntleigh group of companies.
© ArjoHuntleigh, 2010.

ARJOHUNTLEIGH

GETINGE GROUP

www.ArjoHuntleigh.com

ArjoHuntleigh

PO Box 61

SE-241 21 Eslöv

SWEDEN

Phone: +46 413 645 00

Fax: +46 413 645 63

GETINGE GROUP is a leading global provider of products and systems that contribute to quality enhancement and cost efficiency within healthcare and life sciences. We operate under the three brands of **ArjoHuntleigh**, **GETINGE** and **MAQUET**. **ArjoHuntleigh** focuses on patient mobility and wound management solutions. **GETINGE** provides solutions for infection control within healthcare and contamination prevention within life sciences. **MAQUET** specializes in solutions, therapies and products for surgical interventions and intensive care.