

ARJOHUNTLEIGH

GETINGE GROUP

VOYAGER DUO

CEILING LIFT



...with people in mind



Voyager® Duo is a fixed ceiling lift which enables the caregiver to perform safe lifting with less effort during the transfer of patients with reduced mobility.

The *Voyager Duo* has a lifting capacity of 220 lbs (100 kg) and offers an option to change the cassette to a higher capacity of 440 lbs (200 kg).

Therefore, the *Voyager Duo* can adapt to specific care requirements – either at home and/or in long term care facilities.

ArjoHuntleigh has designed a new track installation method – certified at 265 lbs (120 kg) – via anchoring directly into the ceiling joists.



Gate



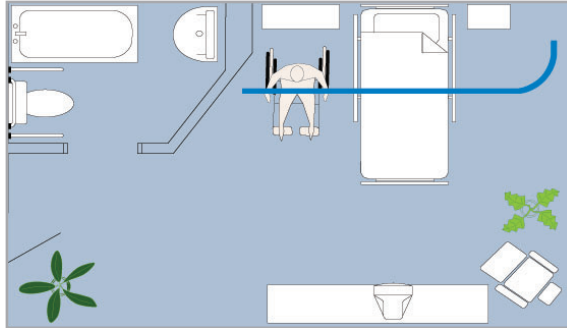
Exchanger



Turntable

ROOM LAYOUT

ArjoHuntleigh's ceiling track system can be integrated into any home environment.

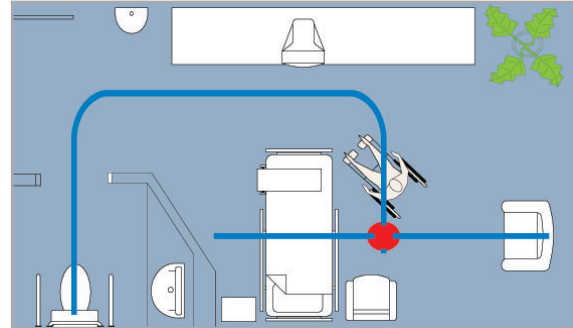


J-shaped Track system

A simple straight track design provides basic point-to-point transfers. The addition of a curved track allows the unit to be conveniently charged in an out-of-the-way location, near the wall.

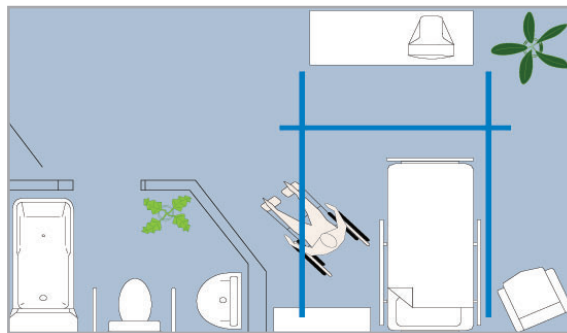
TRACK ACCESSORIES

The *Voyager Duo*'s power sharing feature activates the following track accessories.



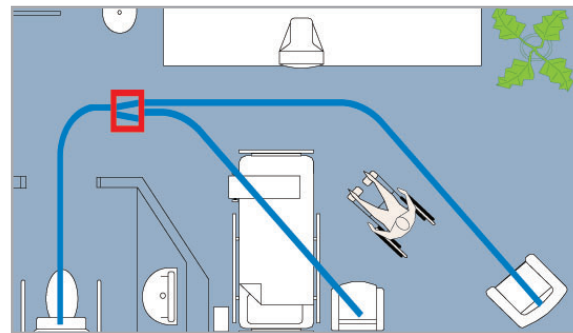
Turntable

The turntable enables the main track to intersect with a secondary track.



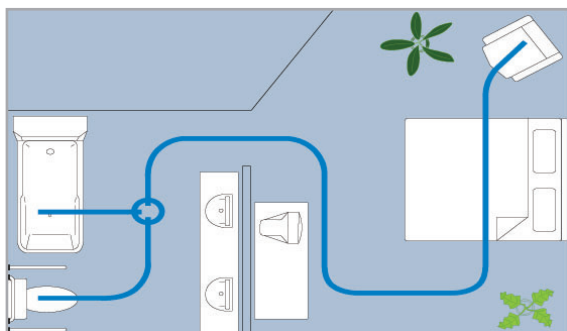
H or X-Y Track system

Layouts such as H or X-Y styles provide better room overall coverage.



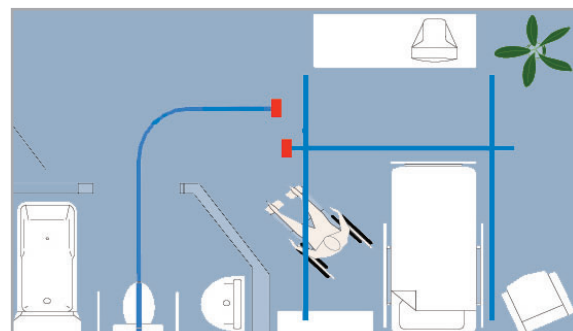
Exchanger

The exchanger functions like a road junction. It allows the lift to access separate care areas.



Room-to-Room Track system

Combined with additional tracks and accessories, the *KWIKtrack* system can be used for complete home coverage.



Gate

The gate enables the lift to transit in and out of a single track system into an X-Y system.

wE bELIEVE wHEN pATIENTs FEEL sAFE, THEY FEEL bETTER.

At ArjoHuntleigh, we strive to have a positive impact on the quality of life for people with reduced mobility and their caregivers. We aim to reduce the strain and complexity of lifting and transferring through education, as well as the use of our professional, ergonomically designed lifting technology.



The handset is ergonomically designed for ease-of-use.

The casing provides a degree of water infiltration protection (IPX4), and the new tactile membrane withstands high volume usage.

The cable is resistant to stretching and retracts to its original length.



ArjoHuntleigh slings feature a color-coded loop design, to easily attach to the sling's spreader bar. For additional safety, ArjoHuntleigh has incorporated security latches into the spreader bar – to keep the loops securely in place.

product Information		
Safe Working Load	2 Way	4 Way
Functionality	Up/Down	Up/Down and Left/Right
Weight	25 lb (11.4 kg)	28 lb (12.7 kg)
Handset	Water Infiltration Protection (IPX4)	
ABS	Fire Retardant, Heat Resistant	
Strap Accessible	Facilitates Maintenance: Change the Strap in 10 Minutes	
Soft Start & Soft Stop Movement		
Battery	Rechargeable 12V/5Ah (2X)	
safety Features		
Emergency Lowering Device	Manual	
Emergency Stop Pull Cord	Accessible to both Patient & Caregiver	
Anti-twist Mechanism for Strap		

Use only ArjoHuntleigh designed parts, i.e. parts specifically designed for the purpose, on equipment and products supplied by ArjoHuntleigh. As our policy is one of continuous development, we reserve the right to modify designs and specifications without prior notice. © and ™ are trademarks belonging to the ArjoHuntleigh group of companies.
© ArjoHuntleigh, 2012



* Safe Working Load (SWL) = 220 lbs (100 kg) or 440 lbs (200 kg)

ARJOHUNTLEIGH

GETINGE GROUP

www.ArjoHuntleigh.com

ArjoHuntleigh Inc.
2349 West Lake Street
Addison, Illinois 60101
Phone: 800-323-1245
Fax: 630-925-7969

ArjoHuntleigh Canada
90 Matheson Blvd West, Suite 300
Mississauga, Ontario L5R 3R3
CANADA
Phone: 800-665-4831
Info.Canada@ArjoHuntleigh.com

GETINGE GROUP is a leading global provider of products and systems that contribute to quality enhancement and cost efficiency within healthcare and life sciences. We operate under the three brands of ArjoHuntleigh, GETINGE and MAQUET. **ArjoHuntleigh** focuses on patient mobility and wound management solutions. **GETINGE** provides solutions for infection control within healthcare and contamination prevention within life sciences. **MAQUET** specializes in solutions, therapies and products for surgical interventions, interventional cardiology and intensive care.



93/42/EEC